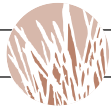


PEREGRINE GH

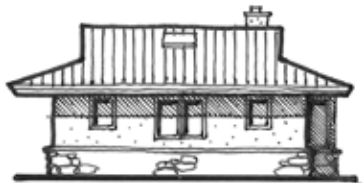
GUEST HOUSE / 732 SQ. FT., NORTH-EAST ENTRY



NORTH



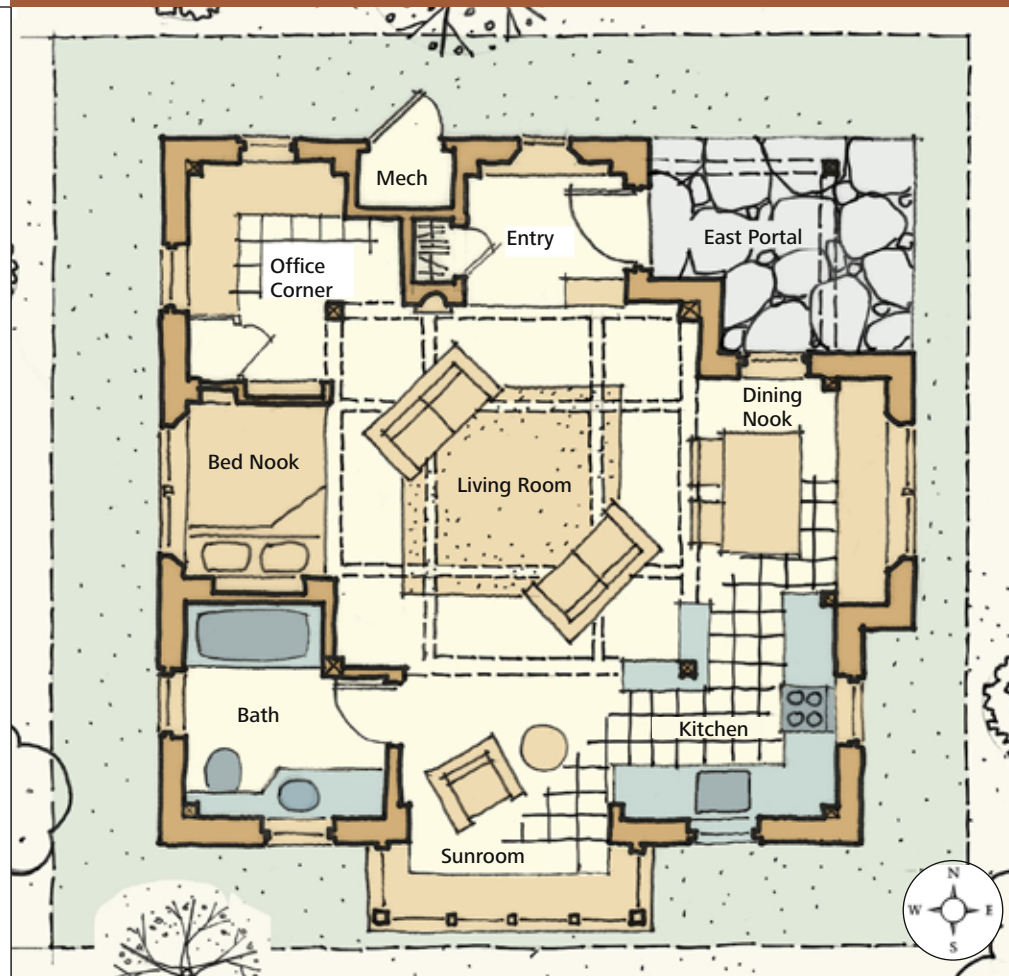
SOUTH



WEST



EAST



FEATURES

Entry

- Generous entry portal
- Sunken entry
- Built-in window seat

Dining Room

- East facing nook
- Deep storage drawers under window seat

Kitchen

- Handcrafted upper shelving
- 42" high divider/pantry to living room

Bed Nook

- Full extension storage drawers under bed
- Deep sill and niches in south and north walls

Office

- Wrap around desk
- Upper shelving
- Built-in bookcase & closet

Living Room

- 14'x14' Central skylit rice paper and cedar ceiling mandala

Bath

- Bright southwest bathroom
- Generous cabinetry
- Generous countertop

Sunroom

- Passive solar gain
- Wide stone sill for plants

This nest is a study in efficiency containing all of the spaces that would be found in a larger home, compacted into 732 square feet. With ship construction as its inspiration, every inch of space is utilized to create beautiful functionality that belies its small size. Office, entry, dining nook, kitchen, sunroom and bed nook all radiate from a large central skylit living room.