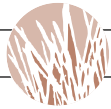


PEREGRINE 22L

2 BEDROOM, 2 BATH / 1,922 SQ. FT.

FEATURES



NORTH



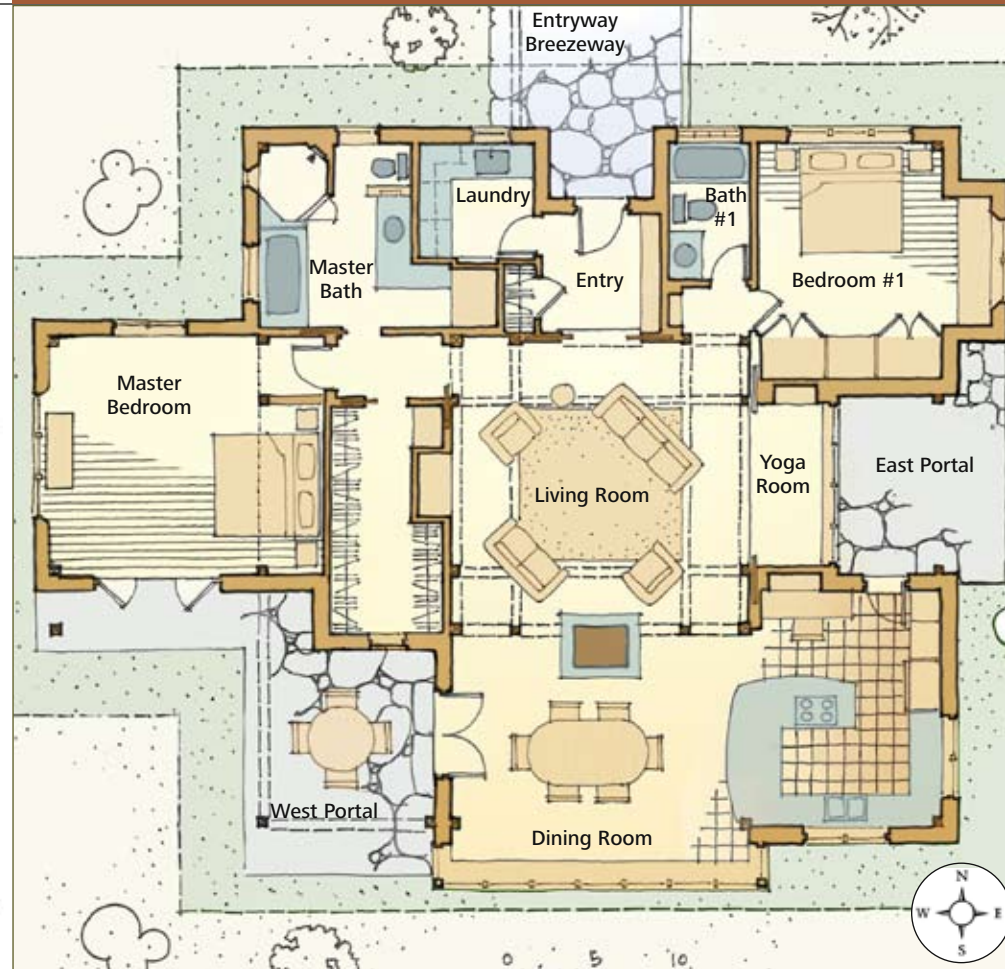
SOUTH



WEST



EAST



Entry

- North entry breezeway to garage
- Stepdown entry with coat closet and bench
- Retractable shoji screens
- Generous laundry room

Living Room

- 18'x18' Skylit rice paper and cedar ceiling mandala
- Built-in entertainment center
- East facing raised platform with shoji screens

Dining Room

- See through masonry heater with wrap around bench shared by living and dining rooms
- Solar window bank w/deep stone sill
- French doors to dining portal

Kitchen

- Open to dining room with curvilinear counter
- Desk with built-in bookshelves
- Pull out pantries
- Handcrafted upper shelves
- Door to east portal

Master Bedroom - Bath

- En-suite bathroom with tub, sauna shower and generous counter
- French doors to yard
- Countertop with 5 banks of drawers
- Round moon-viewing window over tub

Second Bedroom

- East facing window seat
- Wall of built-in storage

This home is the largest of the Peregrine series stock plans. Although moderately sized by current standards it applies all of the Peregrine principles of compact design and open space planning to create an elegant living space. The garage (not shown) houses the mechanical room and is joined to the home via a covered breezeway to the north. This is a perfect plan for a lot offering sunrise and sunset views with an east, west or northerly approach.