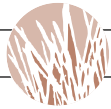


PEREGRINE 22M

2 BEDROOM, 2 BATH / 1,613 SQ. FT. EAST ENTRY

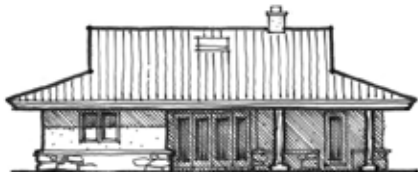
FEATURES



NORTH



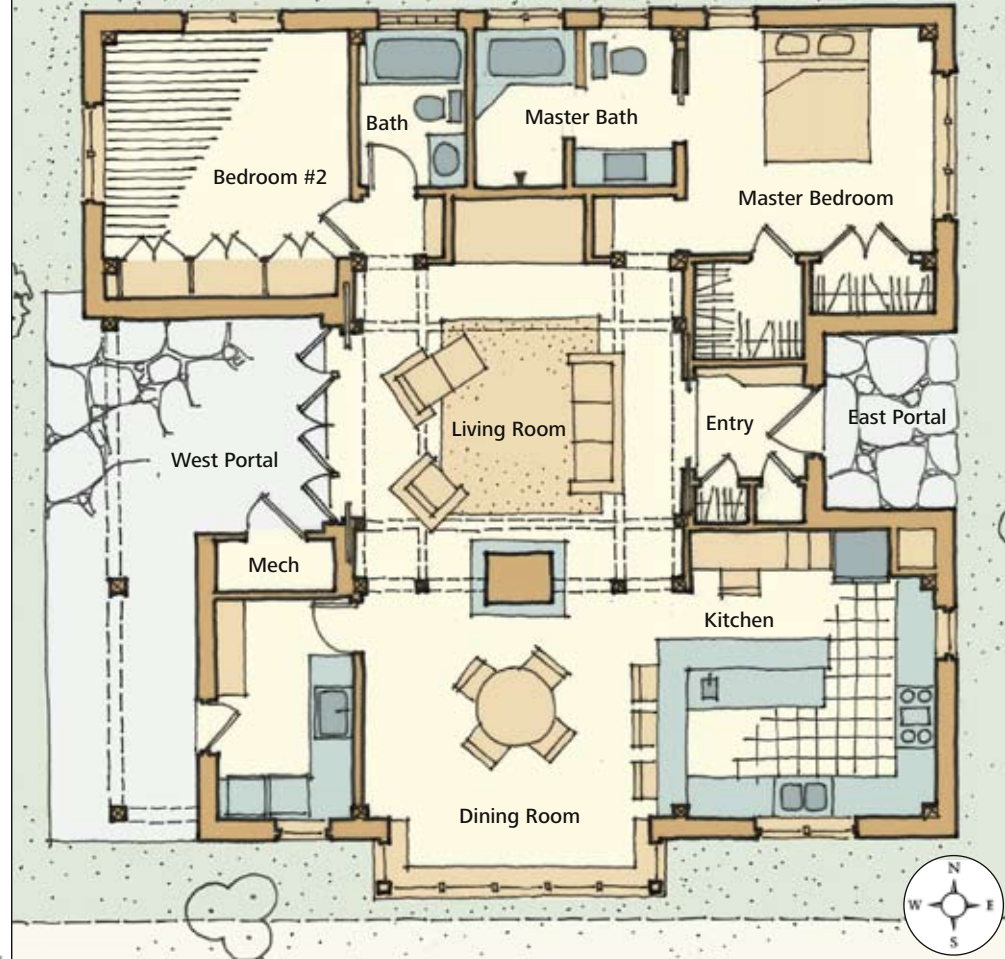
SOUTH



WEST



EAST



Entry

- Covered entry portal with deep roof overhang
- Entry stepped down from main living space
- Coat closet and built-in bench

Living Room

- 16'x16' Skylit rice paper and cedar ceiling mandala
- Large built-in entertainment center
- French doors to generous covered west portal

Dining Room

- See through masonry oven with wrap around bench shared by living and dining room
- Solar window bank
- Deep stone plant sills

Kitchen

- Raised eating bar - seating and buffet space between dining and kitchen
- Telephone / desk area
- Pull out pantries
- 2nd prep sink on butcher block counter
- Handcrafted upper shelves

Utility Room

- Under counter washer/dryer, with generous counter space
- Deep utility sink
- Door to the west portal

Master Bedroom

- En-Suite bathroom and two closets
- Sunny east exposure

This Peregrine home offers an expanse of covered portal for extended outdoor living to the west. It is ideal for a site with entry from the east and west views or west gardens. Mirrored plans are available. Retractable shoji screens on the east and west living room walls, when closed, create an intimate space and reprieve from late afternoon glare. This spacious and efficient layout has no hallways, other than two small bedroom foyers with floor to ceiling built-in bookshelves.