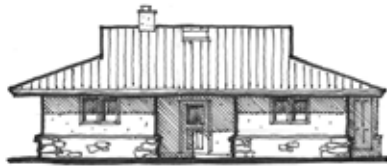
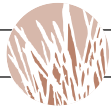
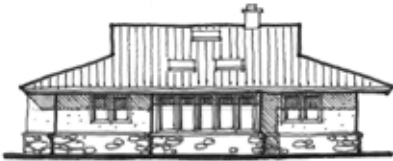


PEREGRINE 220

2 BEDROOM, 2 BATH, OFFICE / 1,566 SQ. FT. NORTH ENTRY



NORTH



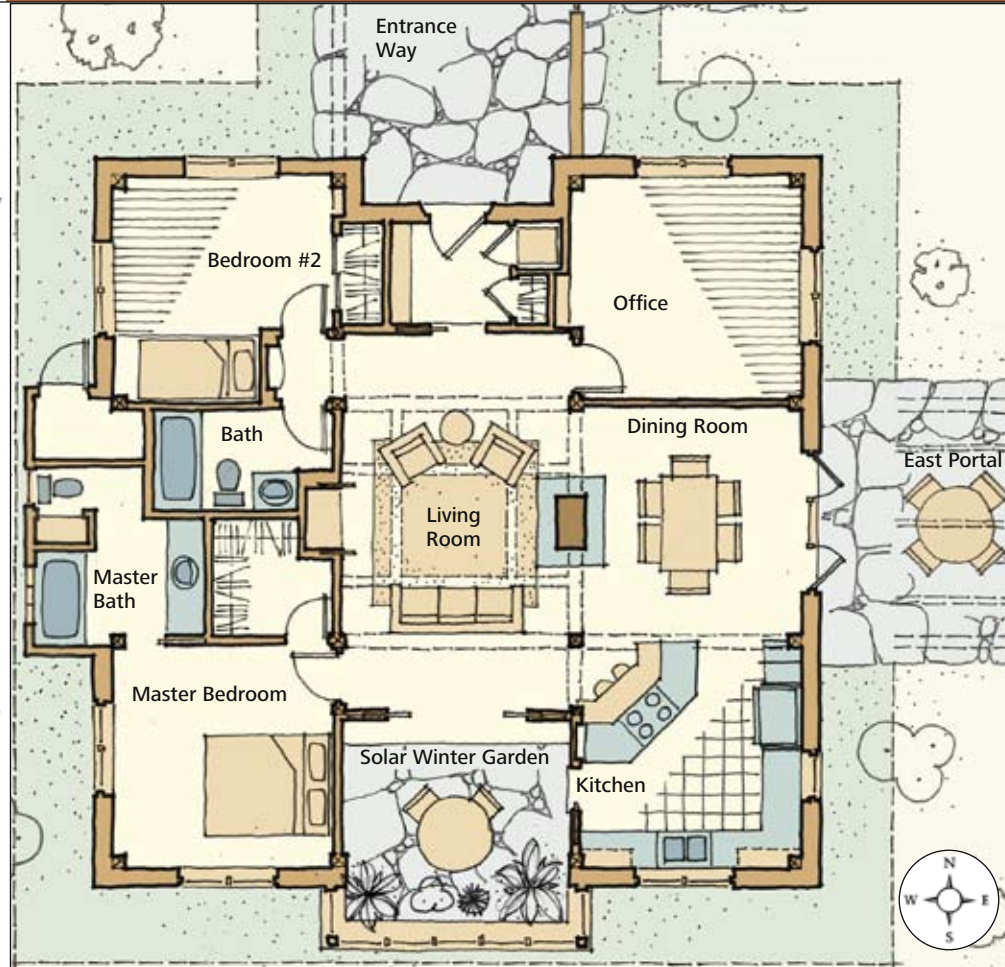
SOUTH



WEST



EAST



FEATURES

Entry

- Stepdown entry
- Coat closet and built-in bench
- Laundry closets
- Retractable shoji screen

Dining Room

- Doors to outdoor east trellis
- Masonry oven centrally located between living & dining rooms

Living Room

- Skylit rice paper and cedar ceiling mandala
- Built-in entertainment center

Kitchen

- Eating bar
- Good natural light
- Handcrafted upper shelf composition

Winter Garden

- Skylights, tall south facing windows and stone floors for passive solar collection and storage
- Deep stone window sill for plants
- Bank of retractable shoji screens

Master Bedroom

- En-Suite bathroom & walk-in closet
- Private commode area

Second Bedroom

- Nook for built-in or bunk bed leaving ample space for play or study

In this home, retractable shoji screens, at the winter garden and entry, open to create an expansive visual axis through the home. When closed the individual spaces become defined and intimate. Shown with doors off of the dining room leading to an east facing trellis, this plan could be easily modified to accommodate a dining room window seat instead. In another variation, the office/den could have a retractable shoji screen wall between it and the dining room. The master bathroom could be enlarged to contain a separate shower or sauna if mechanical room were placed in a garage or carport.