

# PEREGRINE 32.5M

3 BEDROOM, 2-1/2 BATH / 1,846 SQ. FT.

## FEATURES

### Entry

- Extended entry portal leading to front door and kitchen
- Stepped down entry with laundry room and powder room
- Entry closet and bench with niche

### Living Room

- Skylit rice paper and cedar ceiling mandala
- Built-in entertainment center
- Deep east-facing window seat / day bed

### Dining Room

- See-thru masonry heater with wrap around bench shared with living room
- Solar window bank
- Deep stone plant sills

### Kitchen

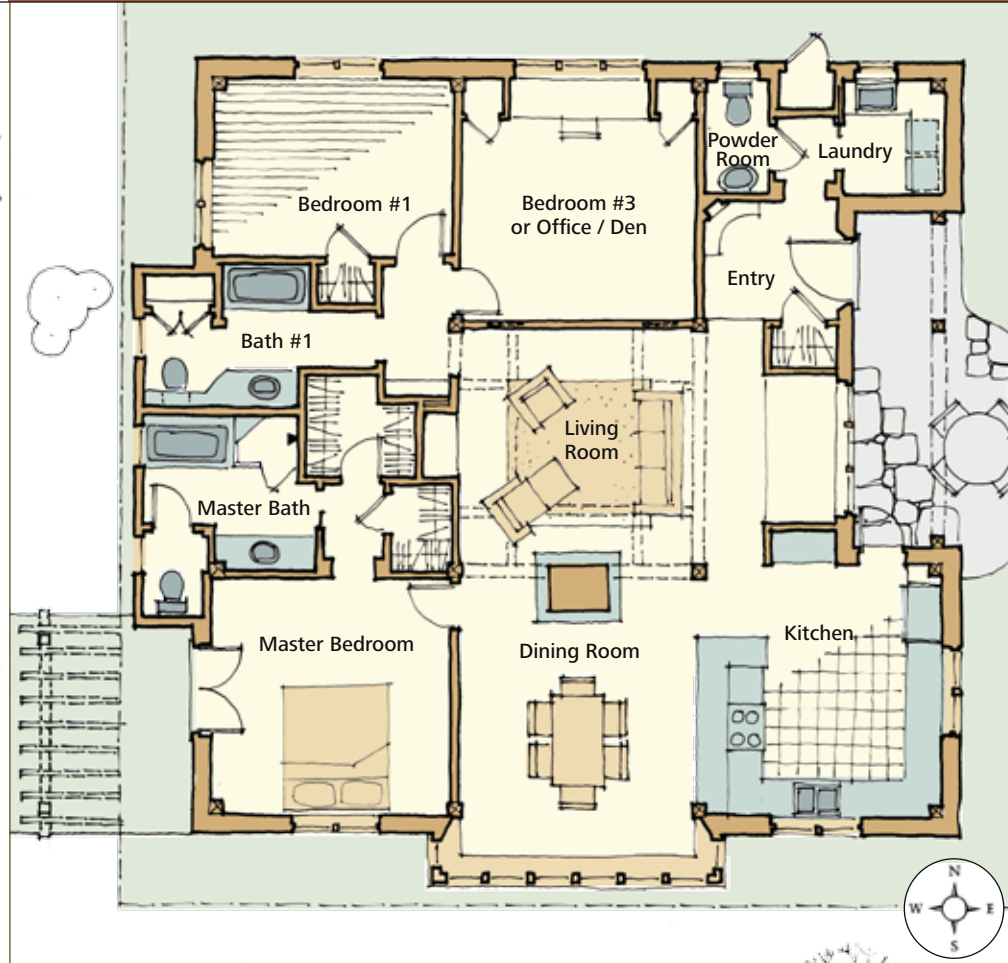
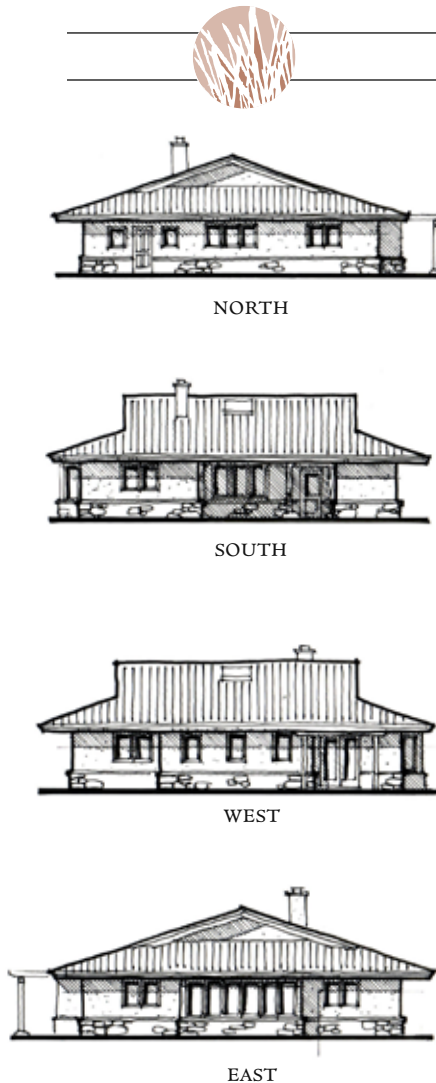
- Raised buffet open to dining room
- Three pull out pantries
- Excellent natural light
- Handcrafted open upper shelving
- Door to east dining portal

### Master Bedroom

- French doors open on to private portal
- Luxurious en-suite bathroom

### Master Bathroom

- Two walk-in closets
- Private commode
- Separate shower and bath



The 32M is the largest of the three bedroom layouts in the Peregrine series. This plan, with the large outdoor room in the southeast corner, is ideal for a site with views or gardens to the south and east (or to the south and west as a mirrored plan.) The mechanical room is located in a detached garage (not shown). The garage could be joined to the north and east by means of a breezeway and used to define either an entry garden to the east or private courtyard to the west.