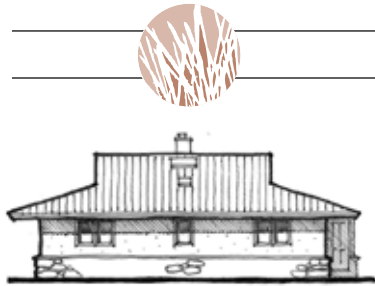


# PEREGRINE 32S

3 BEDROOM, 2 BATH / 1,566 SQ. FT. EAST ENTRY

## FEATURES



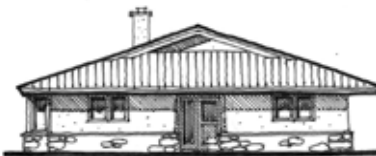
NORTH



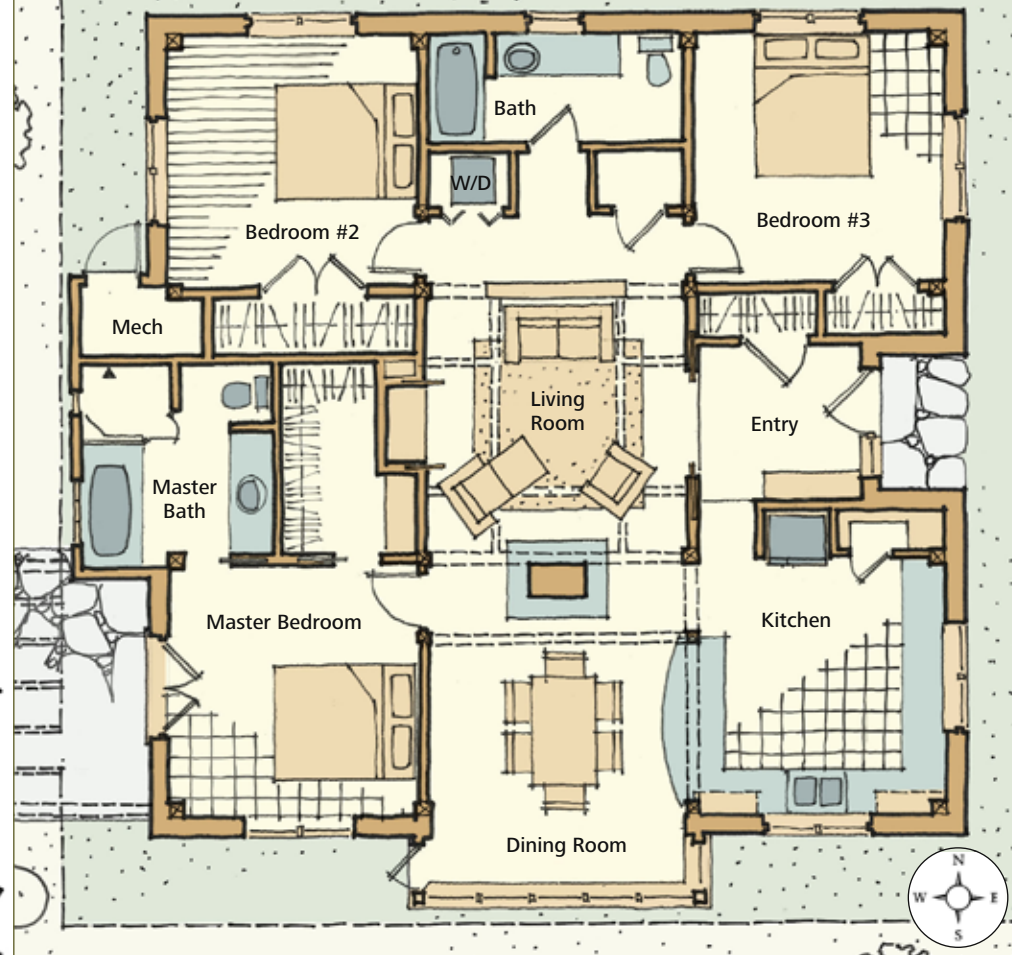
SOUTH



WEST



EAST



### Entry

- Stepped down entry
- Coat closet and built-in bench
- Retractable shoji screens

### Kitchen

- Curvilinear countertop / buffet faces dining room
- Walk-in pantry
- Generous natural light
- Handcrafted uppershelving

### Living Room

- Skylit rice paper and cedar ceiling mandala
- Built-in entertainment center
- See through masonry oven with wrap around bench shared by living and dining room

### Dining Room

- Solar window bank
- Deep storage plant sills
- Door to west

### Master Bedroom

- En-suite bathroom and walk-in closet
- French doors to a trellis covered patio

### Master Bath

- Separate tub and shower or tub - shower and sauna

The Peregrine 32S is the smallest and most economical of our three bedroom plans. Ideal for a site with an east entry approach and views or private outdoor space to the west, a mirrored plan is also available. Living room, dining room and kitchen are arranged in an open space plan and the wall between hallway and living room is a partial height stepped adobe wall, contributing to an open and spacious feel in this compact layout. The master bathroom could be enlarged if mechanical room were placed in a garage or carport.